

Prairie Point Pocket Apron!

vhE115A



Prairie Points embellish this very cute apron for anyone wanting to organize their daily tasks. With four different pockets, it is great for hair dressers, teachers, seamstresses, store clerks, garage sales, vendors, etc. One size fits all!

Supplies Needed --



Front Pocket panel (including lining, waist ties, and pocket trim fabric):

If fabric is absolutely 44" wide after washing, you can use 1/3 yard.
If fabric is less than 44" wide, you need 1/2 yard.

Back panel including the reverse side for the back panel:

If fabric is absolutely 44" wide after washing, you can use a 1/4 yard.
If fabric is less than 44" wide, you need 1/2 yard.

Prairie Points: 1/4 yard.

Optional Embellishments: eleven buttons.

Additional Tools: rotary cutting tools, 25mm Clover Bias Tape Maker.



Prairie Point Pocket Apron!

Prairie Points embellish this very cute apron for anyone wanting to organize their daily tasks. With four different pockets, it is great for hair dressers, teachers, seamstresses, store clerks, garage sales, etc. One size fits all!

General Sewing Instructions --

Please read all instructions carefully before beginning.

Seam Allowances (sa or sas). Seam allowances are 1/4" unless stated otherwise.

Pinning and pressing often during the construction of the project is implied.

Fabric Key. Right sides are represented in colors. Wrong sides are represented in grey.

Paper Pattern Templates. There are no paper templates included in this pattern. Since all pieces are square or rectangle, the LENGTH and WIDTH are given. Measure and cut the length and width accordingly using rotary cutting techniques.

Rotary Cutting. Rotary cutting is an accurate and efficient method for cutting pattern pieces that have a length and width measurement. This pattern uses rotary cutting when a paper template is not provided. Though it is possible to make this pattern without rotary cutting tools, using a grid mat, grid ruler, and rotary cutter is preferred. Note rotary cutting tools are basic to any modern sewer's inventory of supplies.

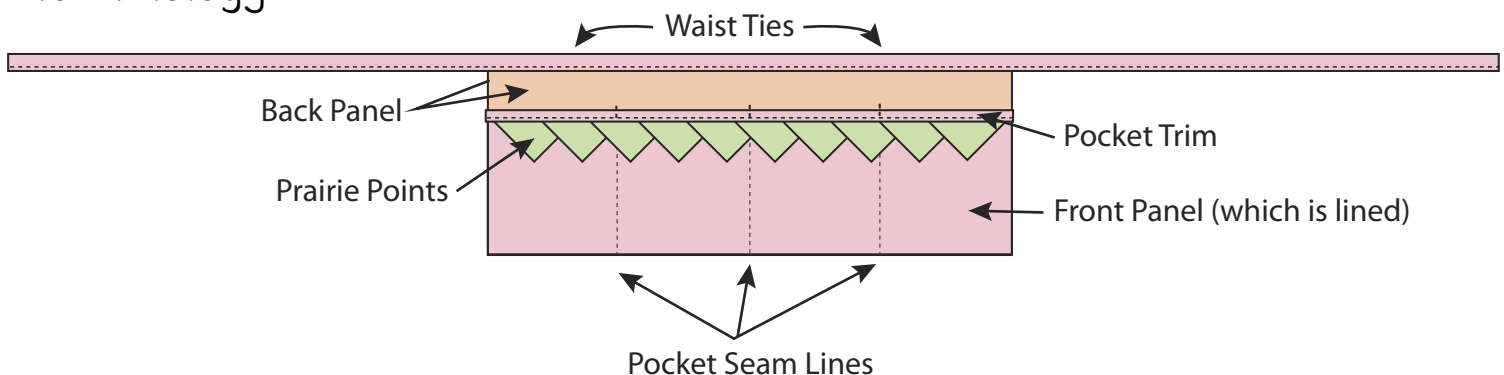
Washing fabrics prior to construction is your preference.

See more fabric versions of "Pocket Aprons" at: www.VanillaHouseDesigns.com or

www.VanillaHouseToday.blogspot.com.

Check out 'Tips and Hints' on www.VanillaHouseToday.blogspot.com for any supplemental conversation about this pattern.

Terminology ~



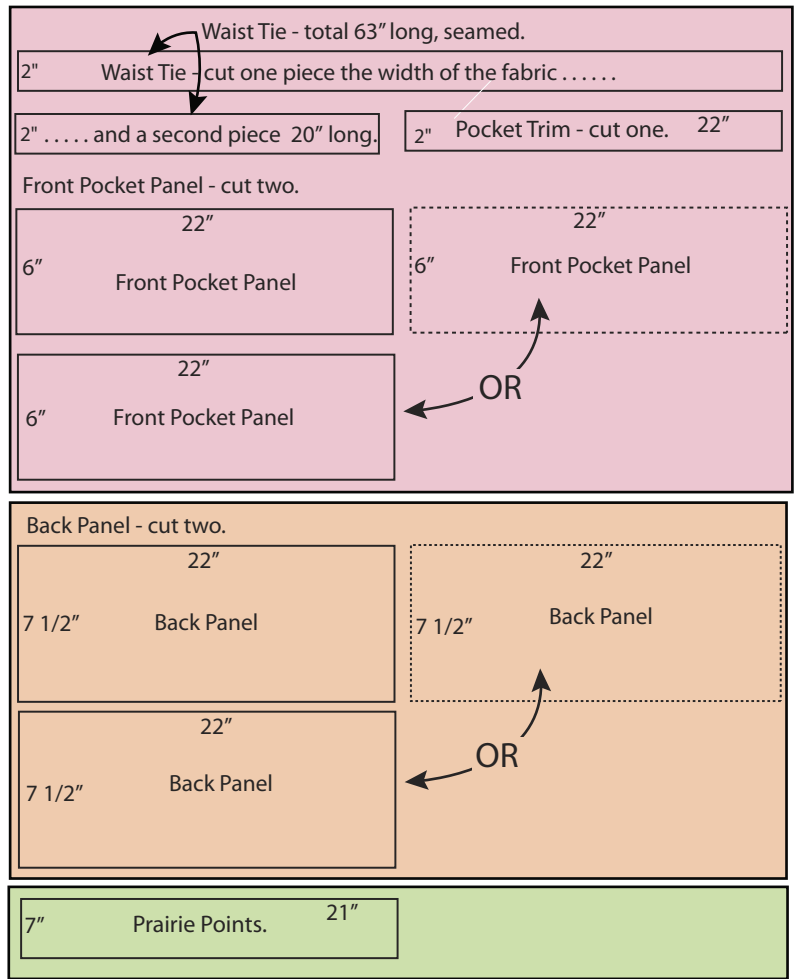
Construction Overview

First begin with making the double-folded waist tie strap and the pocket trim. Both these trims will be sandwiched around the edges of its coordinating piece and topstitched in place on the double-folded edge with the stitching catching the back side too. Then make the strip or row of prairie points. Follow the 'letter' order and 'fold prompts' to easily make the strip. After these two 'parts' are assembled, you are ready to make the apron.

Make the pocket panel by center aligning the prairie point strip to the panel. Sandwich the pocket trim along the top edge and topstitch in place. By sandwiching the assembled pocket panel in between the back panels (right sides together), and sewing around three edges, you can invert the arrangement through the top opening. This keeps all raw seam allowances inside the layers and makes the apron so well made. Lastly, sandwich the waist tie along the top edge and topstitch in place. You can embellish the apron with buttons on each prairie point if you like.

Suggested Cutting Layouts ~

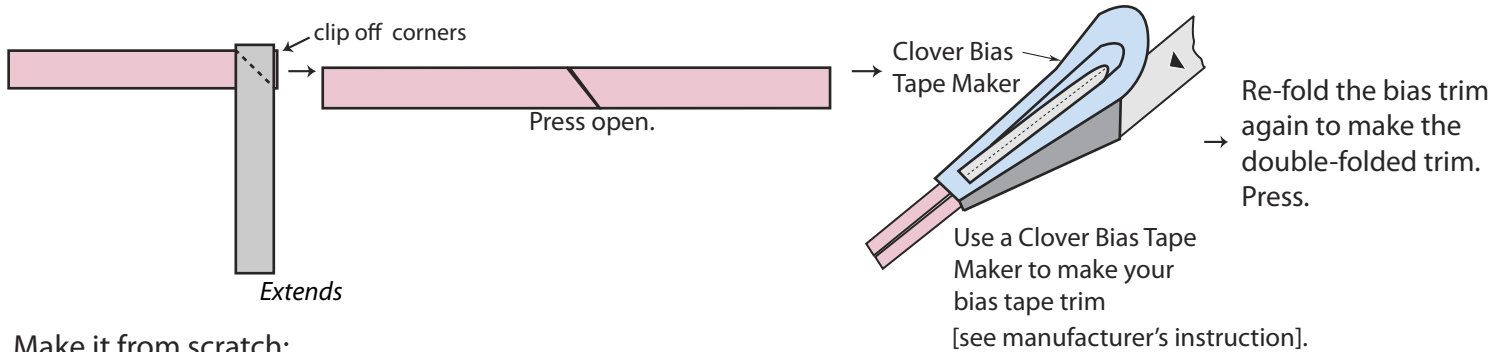
If your fabric is 44" wide, you can cut two panels side by side, allowing you to use your fabric more efficiently. If your fabric is less than 44", you need to cut your panels one after the other.



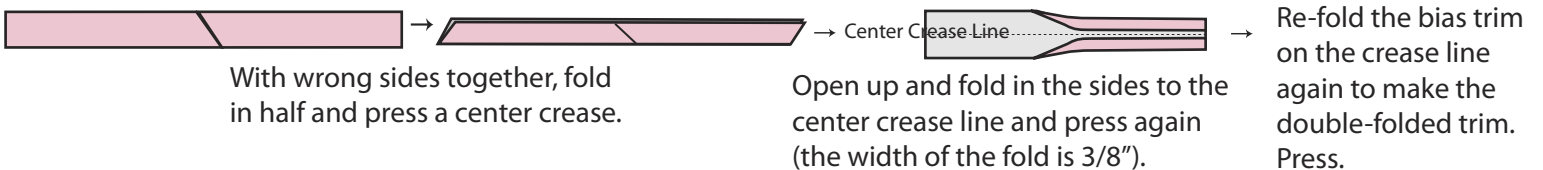
First, make the trims ~

Waist ties: 2" by one the width of the fabric plus an additional 20", seamed together.
 Pocket trim: 2" by 22"

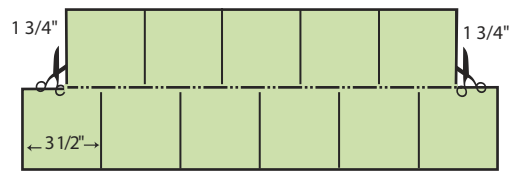
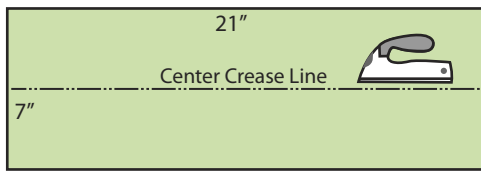
With the Clover Bias Tape Maker:



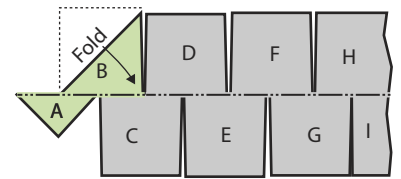
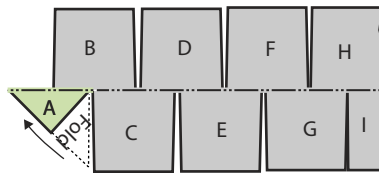
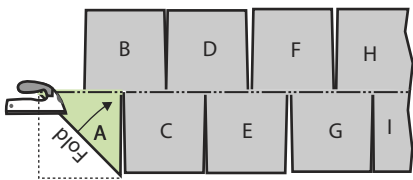
Make it from scratch:



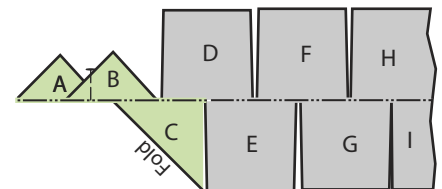
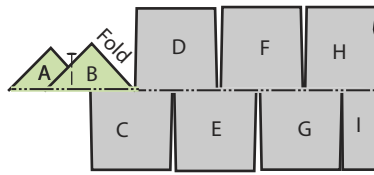
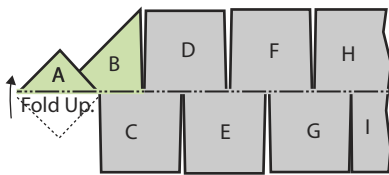
Next, assemble the prairie points ~



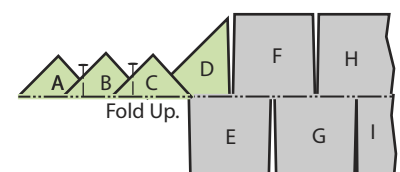
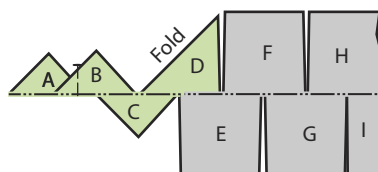
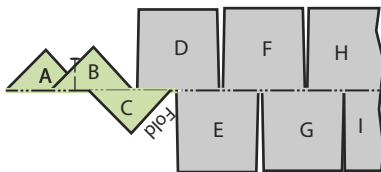
Fold the 7" x 21" strip in half lengthwise and press a crease on that fold. Open back up. Measure and draw lines that are perpendicular to the long center crease as shown above. Cut these perpendicular lines to the center crease line. Cut out the extra two 1 3/4" sections and discard.



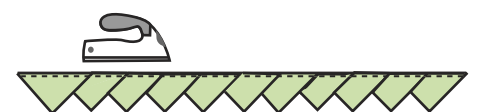
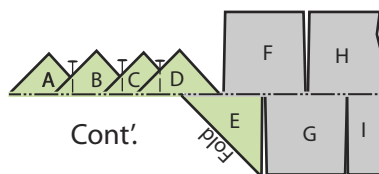
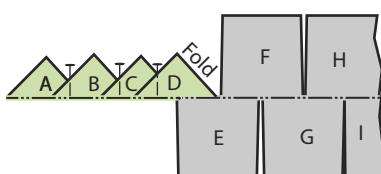
Turn the arrangement over. According to the order of the letters above, you will be folding the squares diagonally into triangles, first in half, and then in half again -- pressing each time (from now on, pressing each fold is implied). But follow the 'fold prompts' on each letter intently. Fold A the two folds, and then fold B the first fold only.



Before the second fold of B, fold A upwards. Then fold the second fold of B. Pin if desired. Now you repeat the last five steps again, starting with C. Fold C the two folds



. and then fold D the first fold only. Fold C upward.



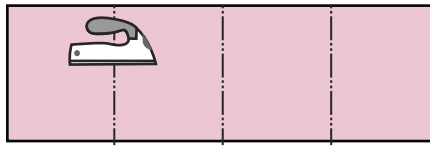
Strip of 11 prairie points.

Then fold the second fold D. Pin if desired.

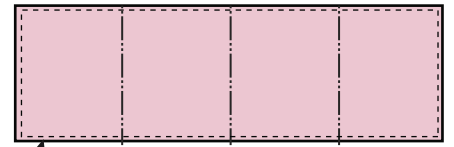
Next, assemble the front pocket panels ~



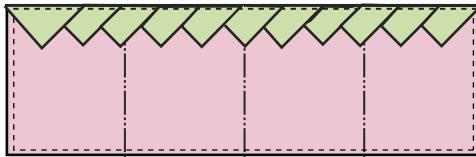
With wrong sides together, align the two front pocket panels together.



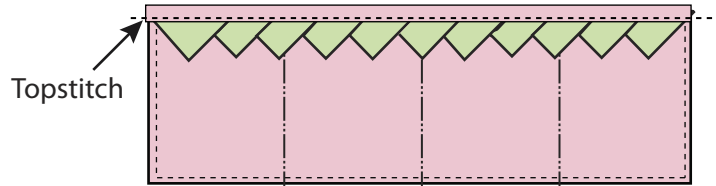
Divide and fold the panel into four equal sections and press crease marks on the three folds.



Baste
With an 1/8" seam allowance, baste around the entire edge.

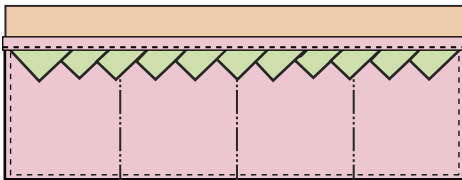


Center align the prairie points on the pocket panel. Baste in place.



Topstitch
Sandwich the pocket trim around the top edge. On the double-folded edge of the trim, topstitch the trim in place.

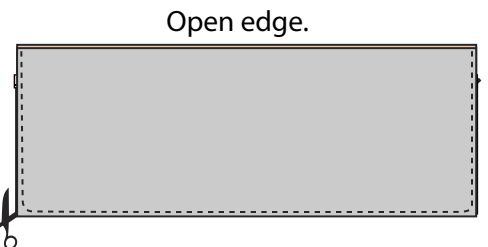
Assemble the apron ~



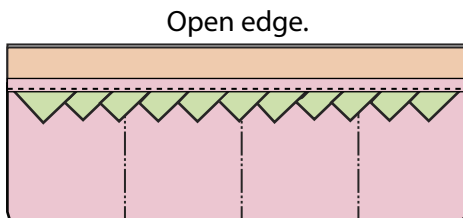
Now place one back panel on your work surface right side facing up. Align the front panel on top. Baste in place.



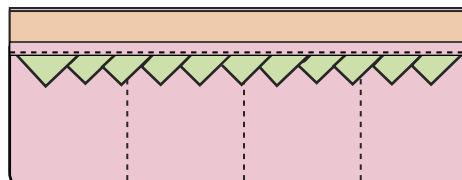
With right sides together, align the other back panel on top of the pocket panel arrangement.



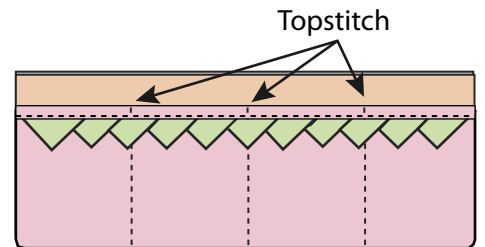
Open edge.
With a 1/4" seam allowance, sew around the three edges shown above, leaving the top edge open. [Tip, you can slightly round the two bottom corners if you like!] Clip the bottom corners.



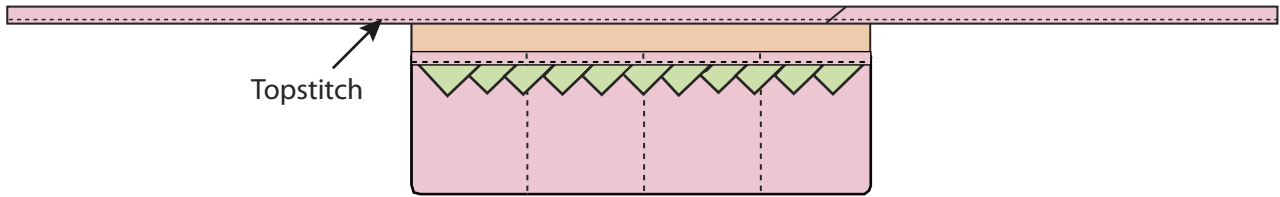
Open edge.
Invert the pocket apron arrangement right side out. Press.



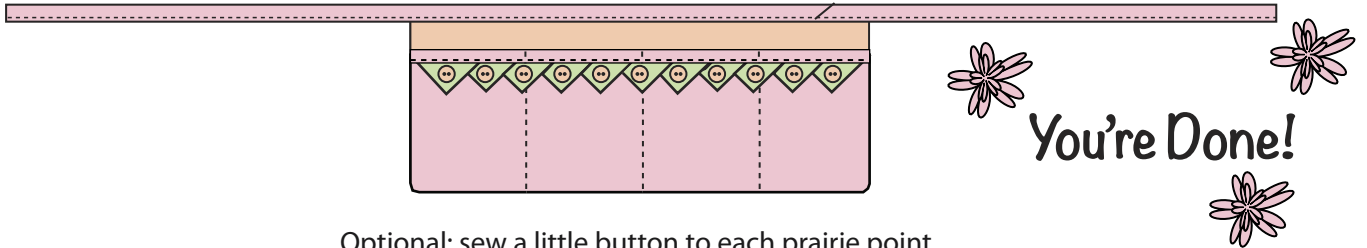
Using the pre-pressed crease marks, sew seams on all three. Pull up the prairie points and sew underneath them as far as you can.



Topstitch
On the trim, sew three small sections that correspond to the seams and to secure the trim in place.



Sandwich the waist tie trim around the top edge of the pocket arrangement and top stitch in place.



Optional: sew a little button to each prairie point.

Criss Cross Apron



If you like Pocket Aprons, you might enjoy Vanilla House's pattern called 'Criss Cross Apron' (199).

2018 Copyright Barbara Brunson. All rights reserved.

Vanilla House designs
 2041 NE Josephine Drive
 Hillsboro, OR 97124
 503.648.0798
 barbara@vanillahousedesigns.com
 www.VanillaHouseDesigns.com
 www.VanillaHouseToday.com

Find us also at Vanilla House Designs on Facebook, Instagram, and Pinterest!

[For updates for this pattern, visit
<http://v-h.us/updates/P115>
 OR contact Vanilla House
 with your questions.]

Check it out!

Copyright 2017. Barbara Brunson. All rights reserved. Permission from Vanilla House Designs is necessary for commercial use or reproduction [see www.VanillaHouseDesigns.com under Terms of Use]. No digital transfer of this pattern in any form is allowed. This information is presented in good faith. Since we have no control over the application of this information, we disclaim liability for any untoward results.