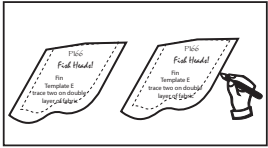
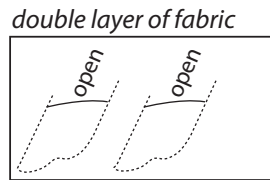


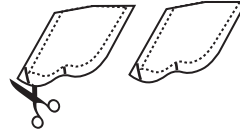
5. Make the fins. (corrected angle shown)



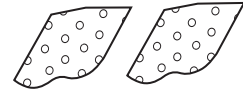
Trace around the paper fin template twice onto the wrong side of the fin fabric.



With right sides together, align a matching piece of fabric. Sew on the trace line, leaving the top open.

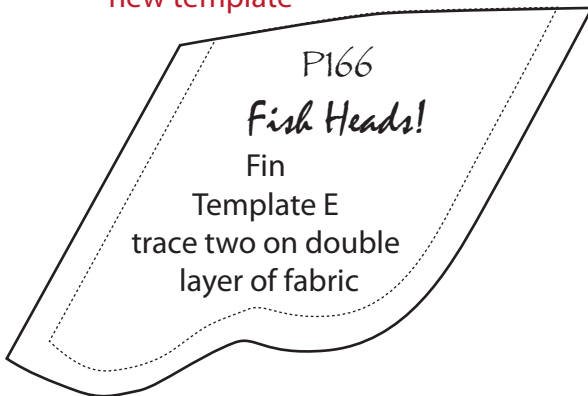


Cut the fins out 1/4" larger than the stitching line. Clip corners and curves.



Turn right side out and press.

new template



Sew You're Done!

corrected angle

